

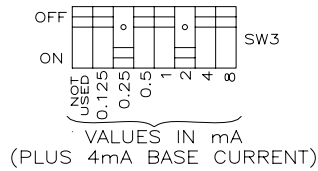
NOTES:

1. SWITCH SETTINGS

THE POSITION OF THE DIP SWITCHES 'SW2' MUST BE SET AS SHOWN FOR THE CARD TO OPERATE CORRECTLY.

2. SWITCHES 'SW3' CONTROL THE 4-20mA OUTPUT IF PACK SERIAL DATA BUS COMMUNICATIONS FAIL.

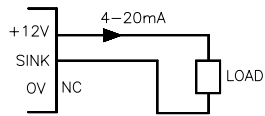
EACH SWITCH WHEN IN THE ON POSITION ADDS THE VALUE SHOWN BELOW TO THE OUTPUT. EXAMPLE BELOW GIVES:-  
 $4 + 0.25 + 2 = 6.25\text{mA}$  OUTPUT.



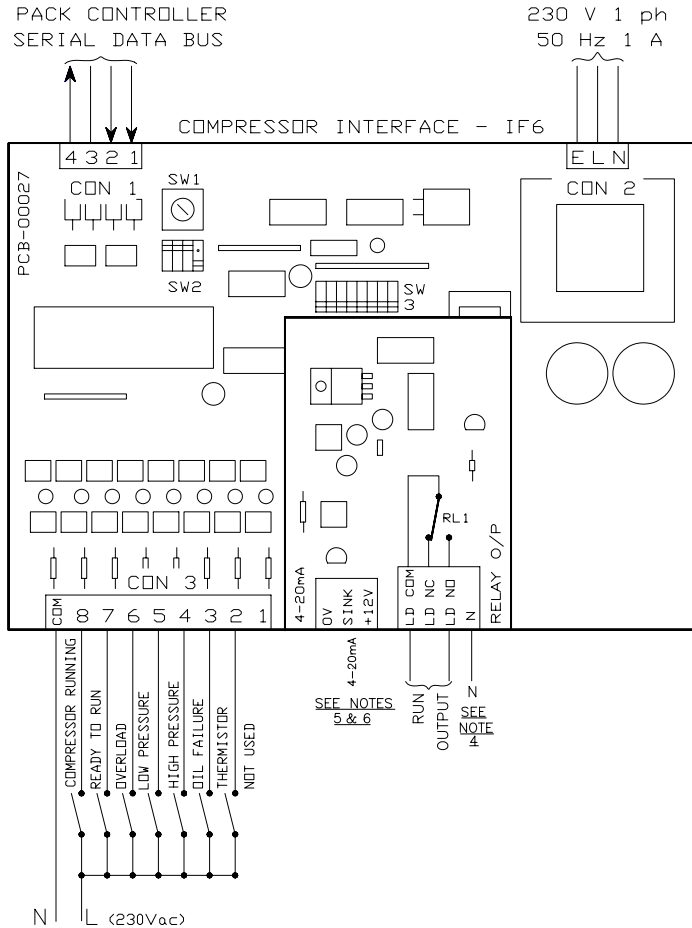
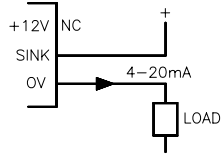
3. FULL SCALE (20mA) OUTPUT IS ACHIEVED WHEN SWITCH INPUT IS SET AT BINARY EQUIVALENT OF 127.

4. WHEN SWITCHING INDUCTIVE LOAD NEUTRAL CONNECTION IS REQUIRED FOR SUPPRESSORS TO WORK.

5. WHEN CURRENT SOURCE OUTPUT IS SUPPLIED BY JTL CARD CONNECT LOAD BETWEEN +12V (CURRENT OUT) AND SINK (CURRENT IN).



6. WHEN CURRENT SOURCE OUTPUT IS SUPPLIED BY EXTERNAL PSU, CONNECT EXTERNAL PSU + TO SINK AND LOAD BETWEEN OV AND EXTERNAL SUPPLY -.



THIS IS AN UNCONTROLLED COPY - UNLESS STAMPED WITH CONTROLLED COPY STAMP

JTL SYSTEMS LTD. 41 KINGFISHER COURT, HAMBRIDGE RD, NEWBURY, BERKSHIRE. RG14 5SJ TEL: 01635-47585 FAX: 01635-31888			
ISS	DESCRIPTION	APP'D	DATE
2	CHANGED TO IF6	MJK	9/96
1	ORIGINAL ISSUE	MJK	6/96
TITLE: 4-20mA INTERFACE WIRING (FOR CPST CONTROLLERS)			
TYPE: IF-6			
PROJ.	DRG No:	SHT	OF
CP	01765	1	1
			ISS
			2