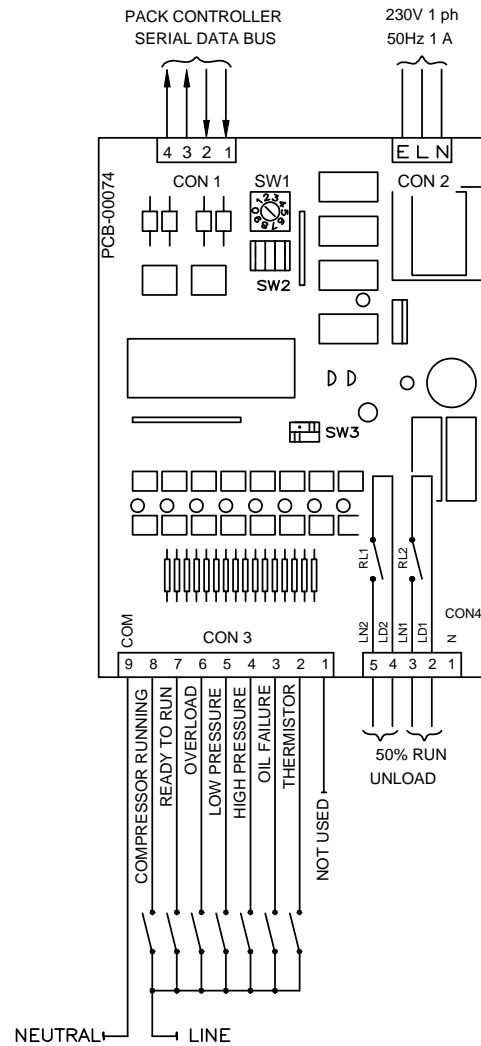
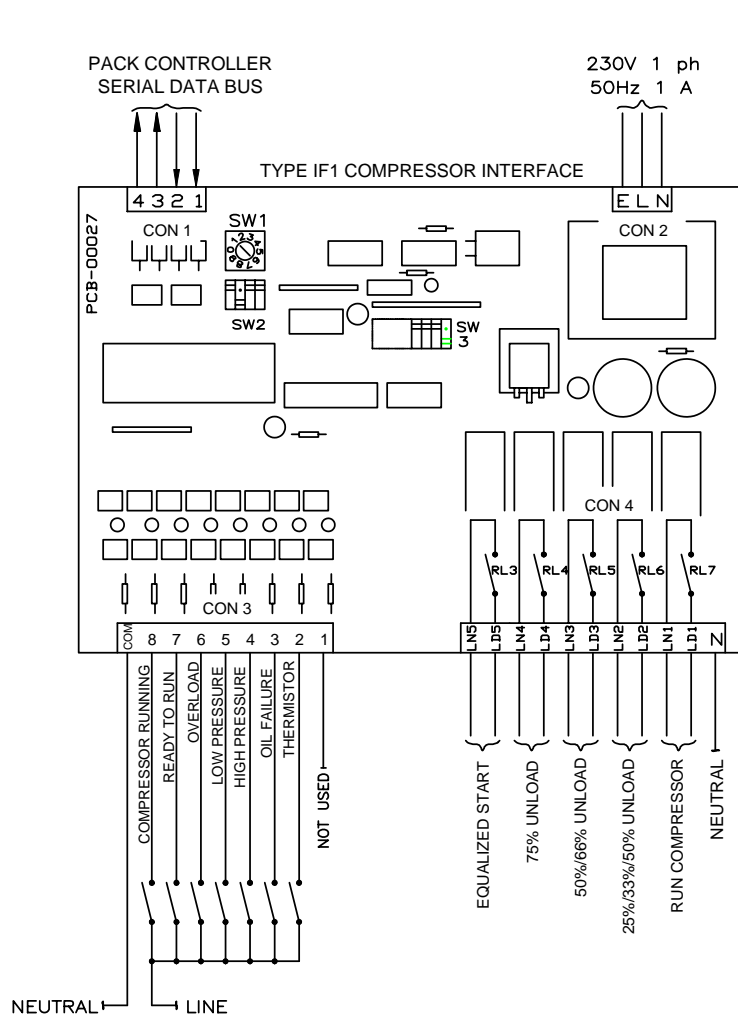



STANDARD COMPRESSOR INTERFACE CONNECTION FOR CP5H & EP6U CONTROLLERS (SEE NOTE 5 FOR LINDE PACKS)



TYPE IF2 COMPRESSOR INTERFACE

NOTES

- INPUT STATES ARE AS FOLLOWS:-  
CLOSED CONTACT = RUNNING, READY or FAULT  
OPEN CONTACT = NOT RUNNING, NOT READY or NO FAULT
- CON3 TERMINAL 9 MUST HAVE NEUTRAL CONNECTED TO IT.
- TO ENSURE THAT INTERNALLY FITTED SUPPRESSORS WORK CORRECTLY, CONNECT LINE VOLTAGES TO TERMINALS PREFIXED 'LN' AND THE CORRESPONDING LOADS TO TERMINALS PREFIXED 'LD'.
- SWITCH SETTINGS  
THE POSITION OF THE DIP SWITCHES 'SW2' MUST BE SET AS SHOWN (IE: DOT SHOWING CLOSED CONTACT ON SECOND FROM LEFT) FOR THE CARD TO OPERATE CORRECTLY.  
  
SWITCHES 'SW3' CONTROL THE OUTPUT RELAYS IF PACK SERIAL DATA BUS COMMUNICATIONS FAIL. (CLOSED 'DOT SHOWING' = RELAY ENERGISED).
- FOR LINDE PACKS USE ALTERNATIVE DRAWING 00363

 <b>JTL SYSTEMS LTD.</b> 41 KINGFISHER COURT, HAMBRIDGE RD, NEWBURY, BERKSHIRE, RG14 5SJ TEL:01635-263646 FAX:01635-263647		
ISS	DESCRIPTION	APP'D DATE
3	ADDED NEW PRODUCT EP6U	MJK 4/02
2	ADDED NOTE 5	MJK 2/99
1	ORIGINAL ISSUE	MJK 7/97

TITLE: COMPRESSOR INTERFACE FOR CP5X & EP6U CONTROLLERS  
TYPE: IF-1 & IF-2

PROJ.	DRG No.	SHT	OF	ISS.
CP/EP	02027	1	1	3

THIS IS AN UNCONTROLLED COPY - UNLESS STAMPED WITH CONTROLLED COPY STAMP