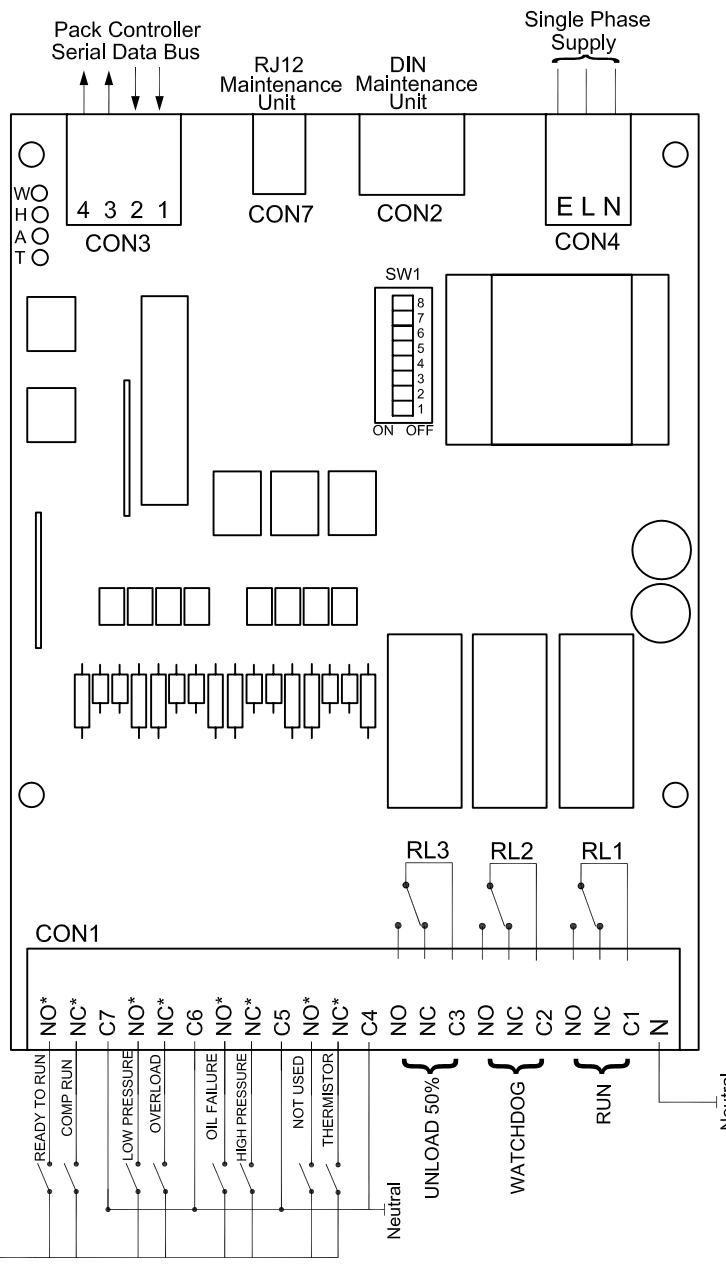


IF12 Application Drawing for Single Compressor control (up to 2 stage) FOR LINDE STYLE PACK CONTROL

Description:

JTL Plant Control Interface comprising 8 opto-isolated mains digital inputs and 3 suppressed changeover relay outputs. A JTL Maintenance Unit is used to configure this product.



Configuration

Interface Type Item 31	Interface No. Item 30
3	0 - 9**

**Upto 10 compressors can co-exist.
Compressor 1 = 1
Compressor 2 = 2
Compressor 10 = 0
etc

NOTES:

- Input states as follows:
Closed contact = Running, Ready, Fault
Open contact = Not running, Not ready, No fault
- Output contacts shown de-energised.
- C4, C5, C6, C7 must have neutral connected to them, and their 'NO' and 'NC' terminals (marked *) are used for inputs as shown.
- C1, C2, C3 must have line connected to them and their respective 'NO' and 'NC' terminals must have corresponding load connected. This ensures the correct operation of internally fitted suppressors.
- Switch SW1 controls the output relays if the pack control serial data bus fails. Switch closed (ON) = corresponding relay energised.
- For non-Linde packs use alternative drawing 02785.
- A JTL Maintenance Unit is required to configure this interface.



JTL SYSTEMS LTD
41 KINGFISHER COURT, HAMBRIDGE RD,
NEWBURY, BERKSHIRE: RG14 5SJ
TEL: 01635 263646 FAX: 01635 263647

ISSUE	DESCRIPTION	APP'D	DATE
1	ORIGINAL ISSUE	MJK	09/02

TITLE:
IF12
Compressor Interface for Linde Pack Controllers

PROJ.	DRG No:	SHT	OF	ISS.
	02784	1	1	1

THIS IS AN UNCONTROLLED COPY - UNLESS STAMPED WITH CONTROLLED COPY STAMP