

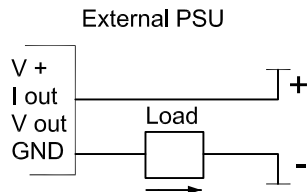
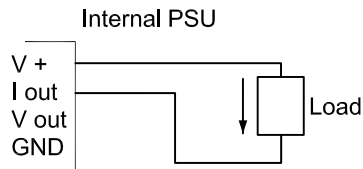
Application Drawing for 4-20mA variable output condenser control using IF14 with EPIC & EPID Pack Controllers

Description:

JTL Plant Control Interface comprising 8 opto-isolated mains digital inputs 7 suppressed non-changeover relay outputs, and selectable current or voltage analogue output.

A JTL Maintenance Unit is used to configure this product.

4-20mA CONNECTIONS

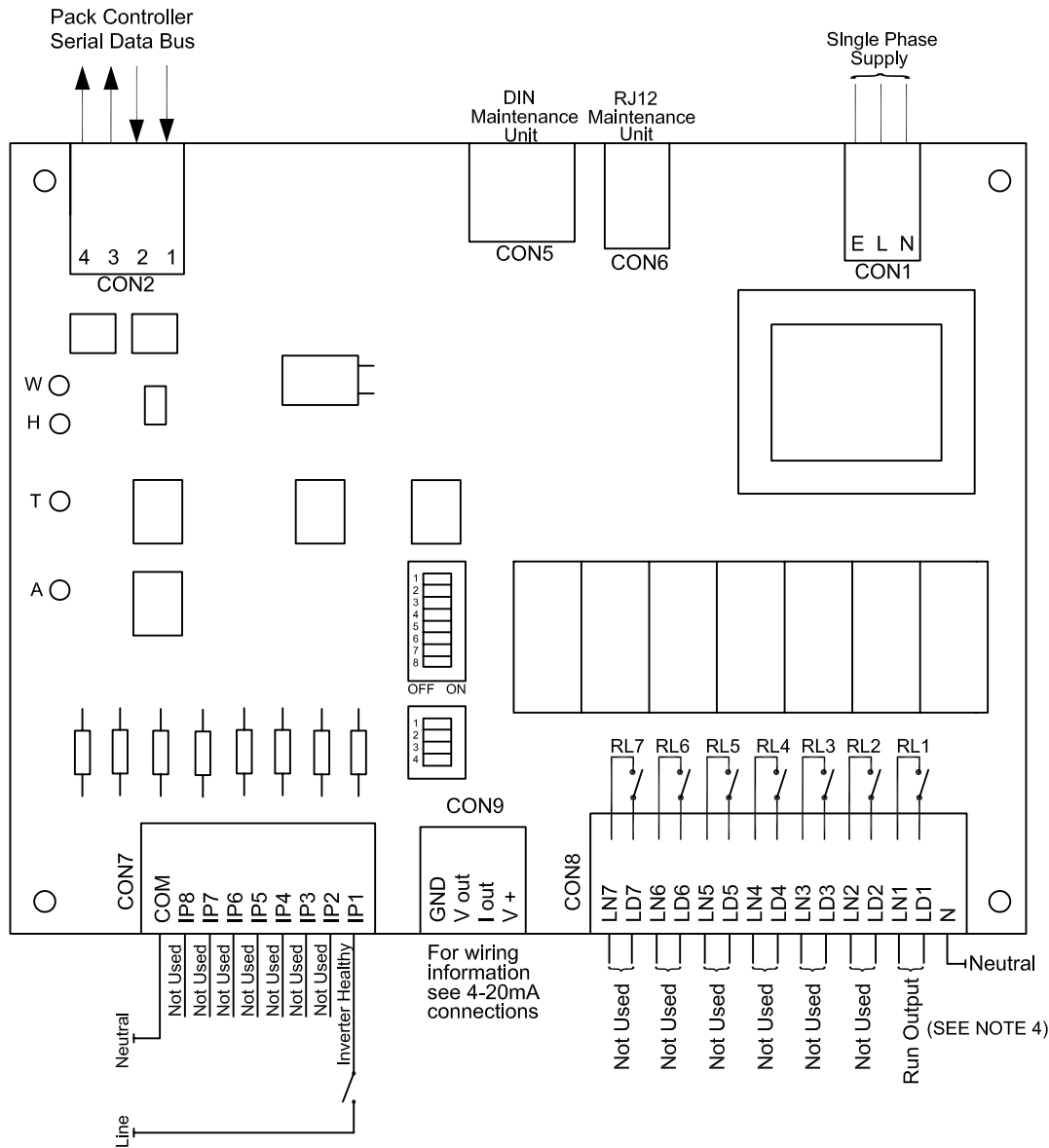


Arrows indicate conventional current flow. PSU must be DC.

Configuration

| Interface type ITEM 31 | Interface No ITEM 30 |
|---------------------------|-------------------------|
| 4 | 0 |
| Analogue Mode ITEM 34 | SW2 * |
| 0 | COOO |

* C = Closed O = Open



NOTES:

- To ensure that internally fitted suppressors work correctly, connect line voltages to terminals prefixed LN and the corresponding loads to terminals prefixed LD. Ensure neutral is connected to terminal marked N. CON8 'N' must have neutral connected to it.
- A backup value to be used if serial data bus communications fail is set on item 35. Note that SW1 has no effect when IF14 is set for analogue mode.
- Interface must be configured according to function using JTL Maintenance Unit.
- Relay RL1 de-energises when the analogue output is minimum ie 4mA or 0v.
- Line voltage present on Input 1 corresponds to inverter healthy.

| | | JTL SYSTEMS LTD 41 KINGFISHER COURT, HAMBRIDGE RD, NEWBURY, BERKSHIRE: RG14 5SJ TEL: 01635 263646 FAX: 01635 263647 | |
|--|---|--|---------|
| ISSUE | DESCRIPTION | APP'D | DATE |
| 3 | CHANGED NOTE 2 AND ADDED NOTE 5 | MJK | 03/03 |
| 2 | ADDED NOTE 4 AND ARROWS SHOWING CURRENT FLOW. | MJK | 02/03 |
| 4 | ADDED EPIC & EPID TO TITLE | MJK | 08/10 |
| TITLE: 4-20mA VARIABLE OUTPUT CONDENSER INTERFACE FOR EPIC & EPID PACK CONTROLLERS | | | |
| PROJ. | DRG No: 02907 | SHT 1 | OF 1 |
| | | ISS. 4 | |

THIS IS AN UNCONTROLLED COPY - UNLESS STAMPED WITH CONTROLLED COPY STAMP