

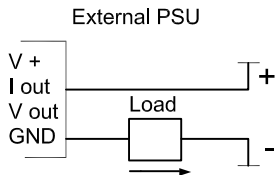
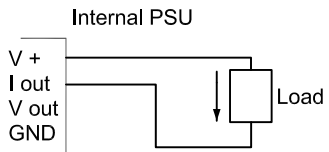
# Application Drawing for 4-20mA variable output compressor control using IF14 with Pack Controller EP6U

## Description:

JTL Plant Control Interface comprising 8 opto-isolated mains digital inputs 7 suppressed non-changeover relay outputs, and selectable current or voltage analogue output.

A JTL Maintenance Unit is used to configure this product.

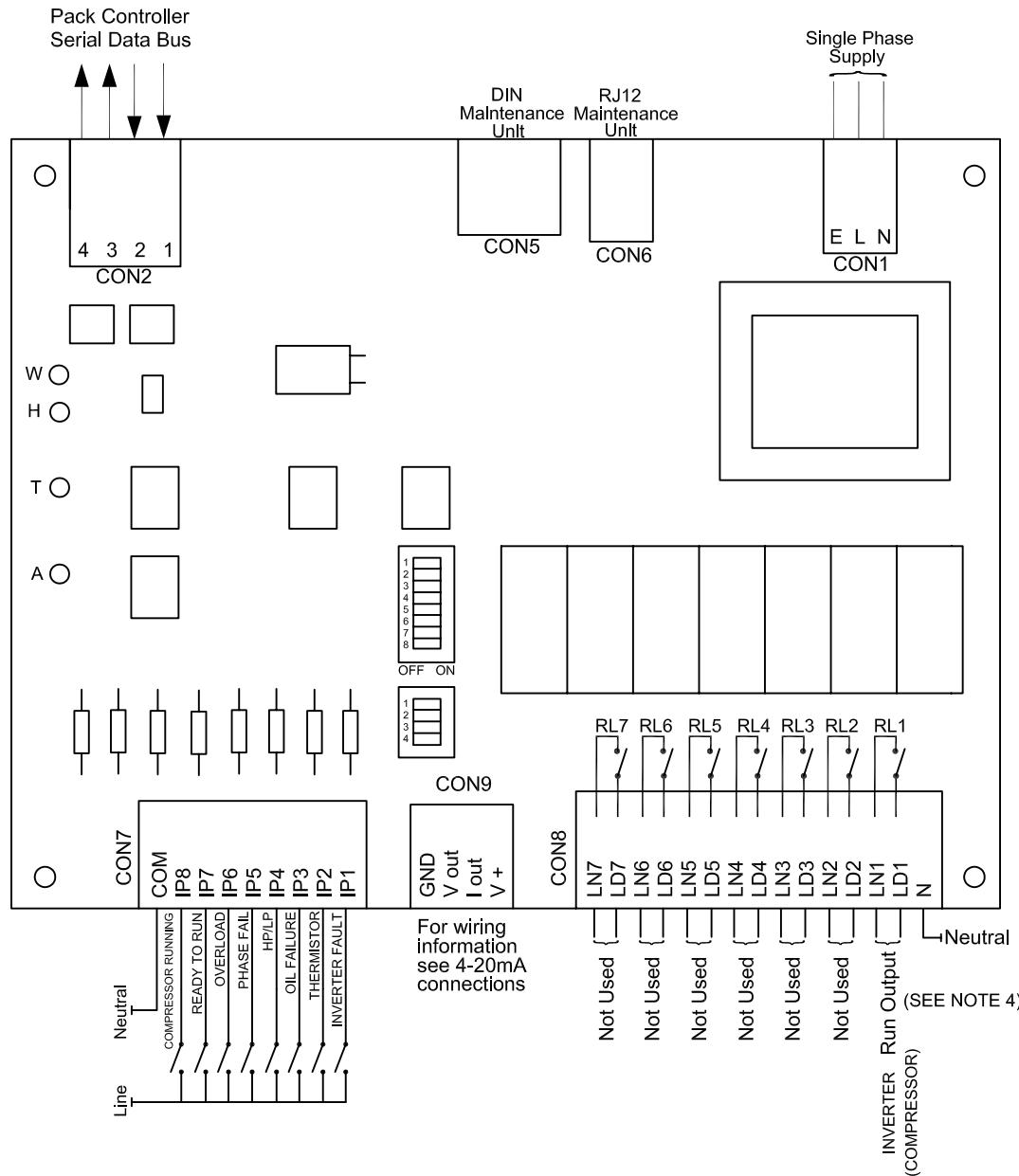
### 4-20mA CONNECTIONS



Arrows indicate conventional current flow. PSU must be DC.

CONFIGURATION		
ITEM	VALUE	FUNCTION
30	1	INTERFACE No
31	7	INTERFACE TYPE
32	2	ANALOGUE
34	3	ANALOGUE MODE

C000	1 2 3 4	C = (Closed) O = (Open)
	C000	



THIS IS AN UNCONTROLLED COPY - UNLESS STAMPED WITH CONTROLLED COPY STAMP

## NOTES:

- To ensure that internally fitted suppressors work correctly, connect line voltages to terminals prefixed LN and the corresponding loads to terminals prefixed LD. Ensure neutral is connected to terminal marked N. CON8 'N' must have neutral connected to it.
- A backup value to be used if serial data bus communications fail is set on item 35. Note that SW1 has no effect when IF14 is set for analogue mode.
- Interface must be configured according to function using JTL Maintenance Unit.
- Relay RL1 de-energises when the analogue output is minimum ie 4mA.
- Line voltage present on Input 1 corresponds to input named state.

		JTL SYSTEMS LTD 41 KINGFISHER COURT, HAMBRIDGE RD, NEWBURY, BERKSHIRE: RG14 5SJ TEL: 01635 263646 FAX: 01635 263647	
ISSUE	DESCRIPTION	APP'D	DATE
1	ORIGINAL ISSUE	MJK	06/11
TITLE: 4-20mA VARIABLE OUTPUT CONDENSER INTERFACE FOR EP6U PACK CONTROLLER			
PROJ.	DRG No: <b>03838</b>	SHT 1	OF 1
		ISS. 1	