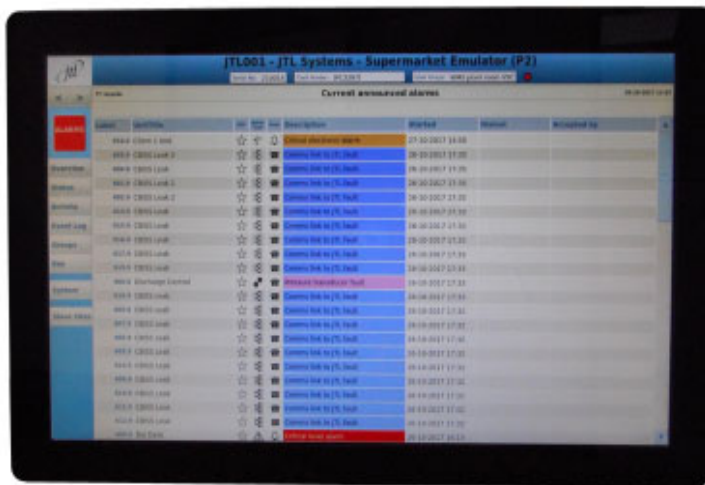




## NETWORK SYSTEMS

### 18.5" Touchscreen Client PC



- Provides access to due diligence temperature records on-site
- Alarm management
- Full alarm reporting capabilities
- Provides SiteSuiteWeb user interface
- Provides on-site fault diagnosis
- Secure software access licensing
- Wall mounting
- IP network addressable

## Product Data

### Product Description

The Touchscreen Client PC provides an access to JTL SiteSuiteServer system.

### Data Access

Data from the JTL network is automatically stored on the server every 15 minutes. The data recorded depends on the connected device and includes temperatures, pressures, humidity, energy meter readings and event history.

Where JTL network components are IP connected data access from the terminal is direct to the unit using appropriate web pages.

### Alarms

Alarms can be accepted on-site using the Touchscreen Client PC, and the historic events preceding the alarm can be investigated.

### Data Manipulation

Fixture monitoring can be disabled for cleaning or maintenance and adjustments can be made, subject to access rights.

High levels of alarm traffic can be identified by fixture or alarm type and trends can be identified enabling targeted pro-active maintenance to be undertaken.

PRODUCT DATA

## Hardware

Network communications ports ..... 1

## Technical Specification

Operating system ..... Xubuntu Linux

Ethernet port (TCP/IP) ..... 10/100/1000 MHz

PC dimensions including wall mount bracket (H x W x D) .... 284 x 464x 70 mm

Unit weight..... 6 kg

Power supply (Standard) ..... 100-230 V 50-60 Hz

## Ordering Information

SITESUITE-PC-18.5 ..... Complete Touchscreen PC



This unit conforms with the relevant EU standards when fitted in accordance with its installation instructions.

Doc No. 04866-185TouchscreenClient-PC.pmd Issue 2 Feb 2019

### JTL Systems Limited

<b>Head Office</b>	Newbury	<b>tel:</b> 44 (0)1635 263646
<b>Technical Support Centre</b>	Newbury	<b>tel:</b> 44 (0)871 3157535
<b>Monitoring Centre</b>	Newbury	<b>tel:</b> 44 (0)871 3157531