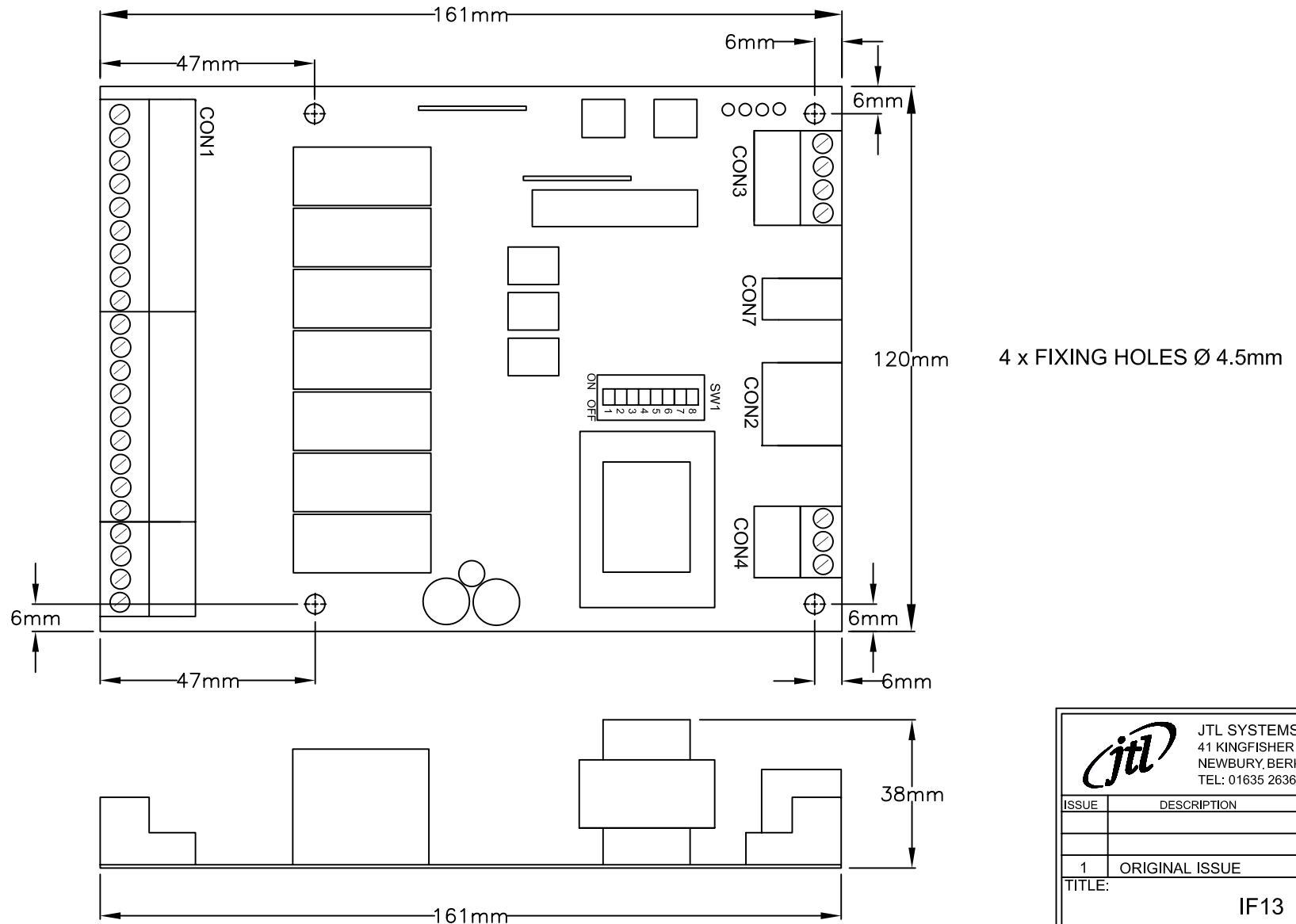


IF13 JTL PLANT INTERFACE



THIS IS AN UNCONTROLLED COPY - UNLESS STAMPED WITH CONTROLLED COPY STAMP

JTL SYSTEMS LTD 41 KINGFISHER COURT, HAMBRIDGE RD, NEWBURY, BERKSHIRE: RG14 5SJ TEL: 01635 263646 FAX: 01635 263647			
ISSUE	DESCRIPTION	APP'D	DATE
1	ORIGINAL ISSUE	MJK	07/02
TITLE:			
IF13 PHYSICAL ARRANGEMENT			
PROJ.	DRG No:	SHT	OF
	02781	1	1
		ISS.	
		1	