

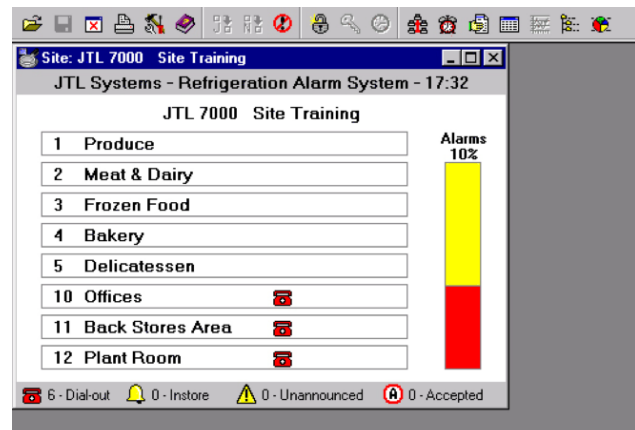


SALES SUPPORT JTL SiteSuiteClient Installation Notes for new licence installations



Please read through before commencing the installation.

SiteSuite software must be installed by the computer administrator**



CD may run automatically when inserted (depending on your PC settings), if it doesn't:

- Use Windows Explorer to locate CD drive and it's contents. Select **Setup.exe** file (not the text file).
- Installation wizard will start, Click **Next**.
- Licence agreement will appear tick appropriately. Click **Next**.
- Enter User Name and Company Details. Click **Next**.
- Select Custom, Next. De-select features not required by clicking on them and selecting X. These items will then not be installed. Click **Next**.
- Select **Install** and software will be installed.
- Select **Yes** to restart PC (if requested).

Start **SiteLicence Manager**.

(Start - Programs - JTL SiteSuite - SiteLicence Manager)

- SiteLicence Manager will now display a **Machine key** number.
- *Contact JTL and request a Licence File. (JTL will require information listed overleaf)
- JTL can email this file or provide it on a floppy disk.
- When this file is delivered, point at the file and double click on it and the licence should automatically be installed.
- If step 11 doesn't install automatically, enter SiteLicence Manager as 7 above, click the install icon and select the licence file sent by JTL.

**** NOTE** when installing under Windows 7 this **MUST BE THE ADMINISTRATOR**. Having "admin" rights is insufficient and the install will fail. Becoming The administrator requires full IT rights over the PC and knowledge of how to do this. Consult your systems administrator on this advising of the above requirements.

Start **SiteEngineer**

(Start - Programs - JTL SiteSuite - SiteEngineer)

- Select **Options** in the File drop down menu (or use icon)
- Select the **Remote** tab
- At JTL Network window, select your modem.
- Click **Configure**
- Select **Connections** tab
- Settings should be:
Data bits = **7**
Parity = **Even**
Stop bits = **1**
- Click **OK**
- Options window will appear again – Click **OK**

Software is now set up for remote access to a JTL Network.

Installation Tips overleaf

Installation Tips

Contact JTL:

When contacting JTL to request a **Licence Code**, the following information will be required:

- Software purchase order number.
- Machine Key number.
- Computer make and model.
- Computer serial number.
- Operating system (i.e. Win95, Win98, Win2000, WinMe etc)
- Your email address

Call JTL Newbury on 01635 263646

OR

E-mail JTL at

(Machine key number will be automatically inserted into the e-mail message by selecting the Send Machine Key icon).

OR

Fax JTL on 01635 263647

The JTL software registration form can be used to fax the Machine Key number.
The Licence File will be emailed back to you.

The Machine Key number can be copied and pasted into an office document.

Minimum PC Specification

Windows 95 minimum, 32 Mb RAM, CD Rom Drive.

Monitor: 800 x 600 resolution

Preferred: Windows ME, 2000, XP 128 Mb RAM, 1024 x 768

Doc No. 02903 JTL-SiteSuiteClient-Inst-Notes.pmd Issue 2 June 2013

JTL Systems Limited

Head Office

Newbury

tel: 44 (0)1635 263646

Technical Support Centre

Sheffield

tel: 44 (0)114 256 0908

Monitoring Centre

Sunderland

tel: 44 (0)870 3215791